

Lethbridge Police Service

Downtown Policing Unit

SGT RYAN DARROCH



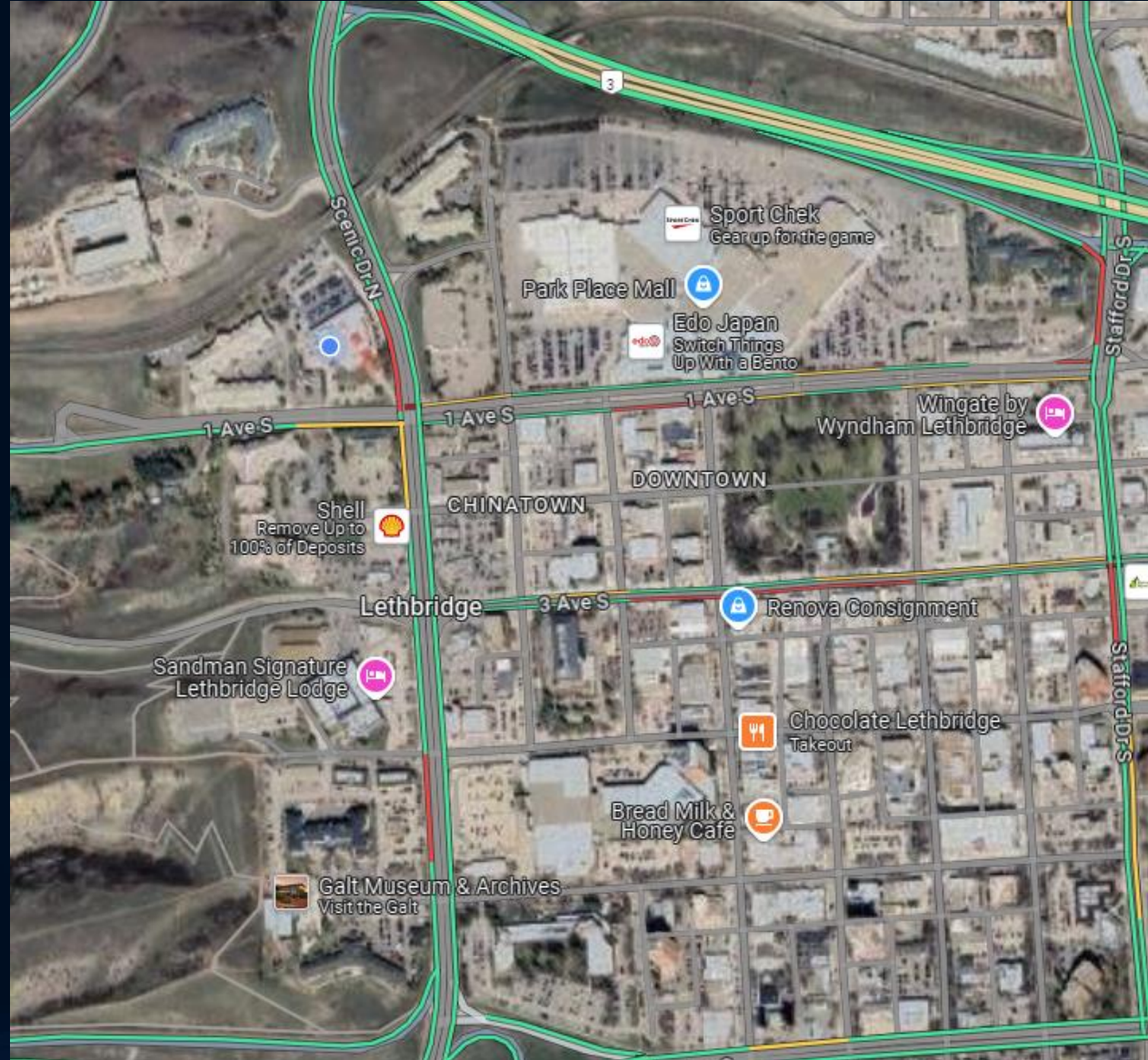


Downtown Policing Unit

- Attend calls for service related to out DT population
- Dedicated unit to provide proactive and reactive response to calls
- Visible presence - foot, bicycle patrols, DPU Marked Vans
- Liaison with downtown businesses
- Works in partnership with health, mental health and social service agencies
- Works collaboratively with other specialty units to conduct targeted enforcement projects

Downtown Lethbridge

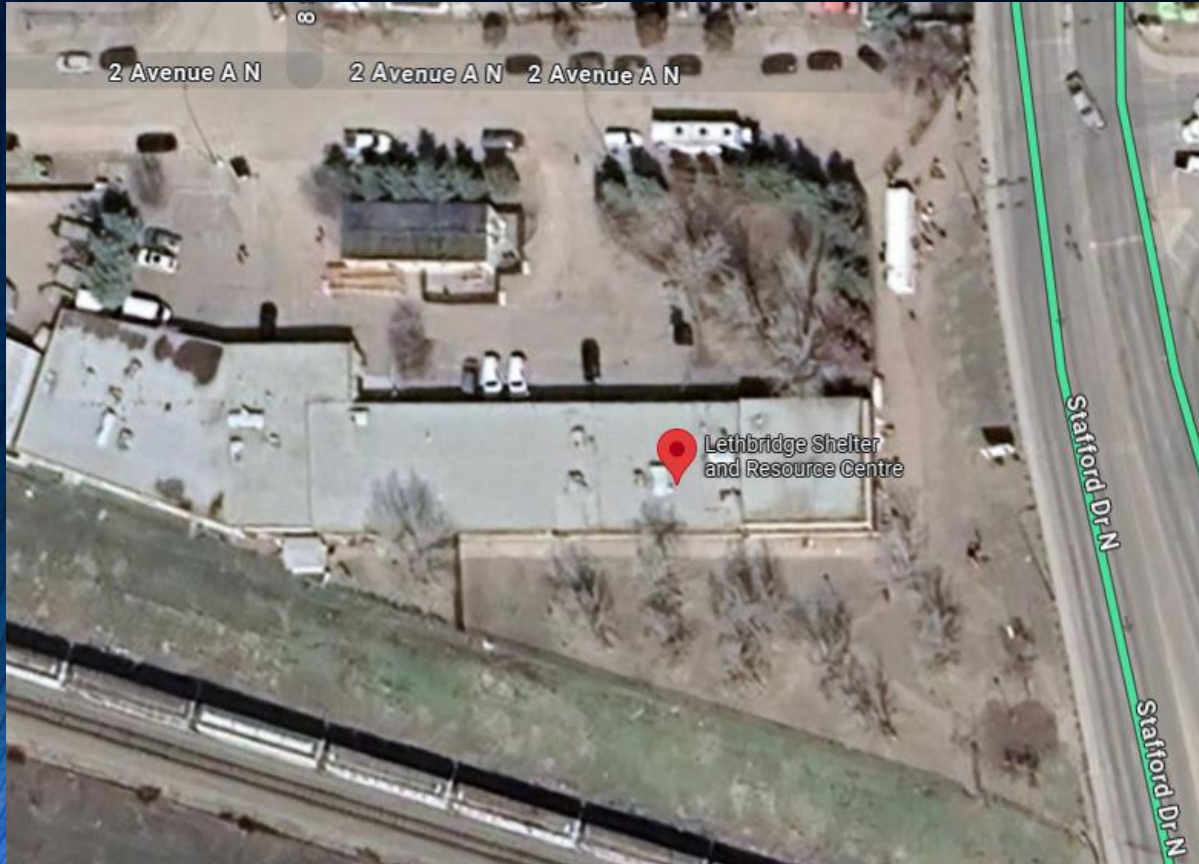
DPU Zone is
43 City
Blocks





- Downtown Lethbridge includes 570 separate registered businesses and 85 not of profit organizations
- Some businesses have moved out of DT due to their customers perception NOT feeling safe. These events usually include a social media portion that erodes trust in the police and in turn the cooperate brand of the City of Lethbridge.
- LPS has been dealing with a staffing crisis and dropped DPU from 8 Cst and 1 Sgt to 2 Cst and 1 Sgt.
- This limited ability to have a visible officer presence by DPU has led to increased wait time for calls for service for community partners.

Blood Tribe Health Shelter



- Houses 70-200 clients a night
- First indigenous Health shelter operator in Alberta
- Only option for adult shelter
- Building not designed to be a shelter
- Emergency access is very limited
- Central location just off DT
- Difficult to manage access

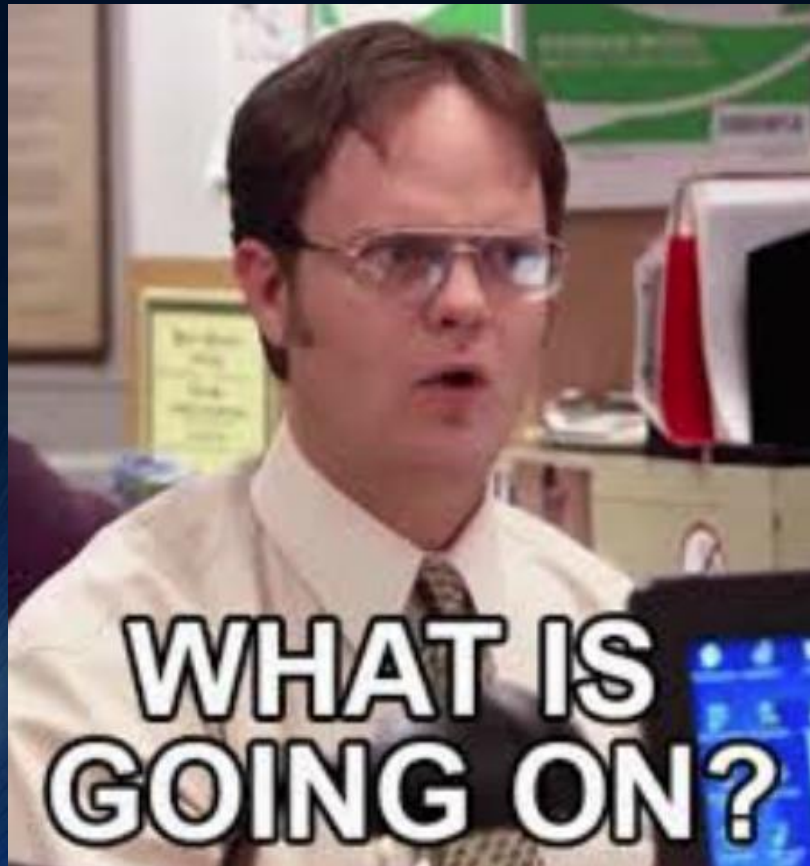


Our relationship has grown with the Blood Tribe Health Shelter.

Initially it was very stressed but after a tidal wave of staff turnover it has gotten MUCH better.

We are proud to call them partners now!!

What is happening?



STIMULANTS

Meth is king!

- Methamphetamine is the most common street drug in Lethbridge
- Restlessness, hyperactivity
- Twitching, tremors, numbness, repetitive and obsessive behaviors
- Dilated pupils, flushing
- Dry mouth
- Dry and/or itchy skin, acne
- Blood pressure changes
- Increased body temperature, sweating



Meth is sold by the point at \$2-\$8
a point depending on who are.



Fentanyl and other depressants



- Slumped over in an unnatural position
- Blue fingernails
- The skin may also change to a darker blue or grayish tone (BLUE LIPS)
- Inability to communicate effectively
- Shallow breathing, or no breathing
- Heart rate slows down or offbeat
- Loss of consciousness

Fentanyl Pipe – Points \$10-\$25



Fentanyl dealers area adapting

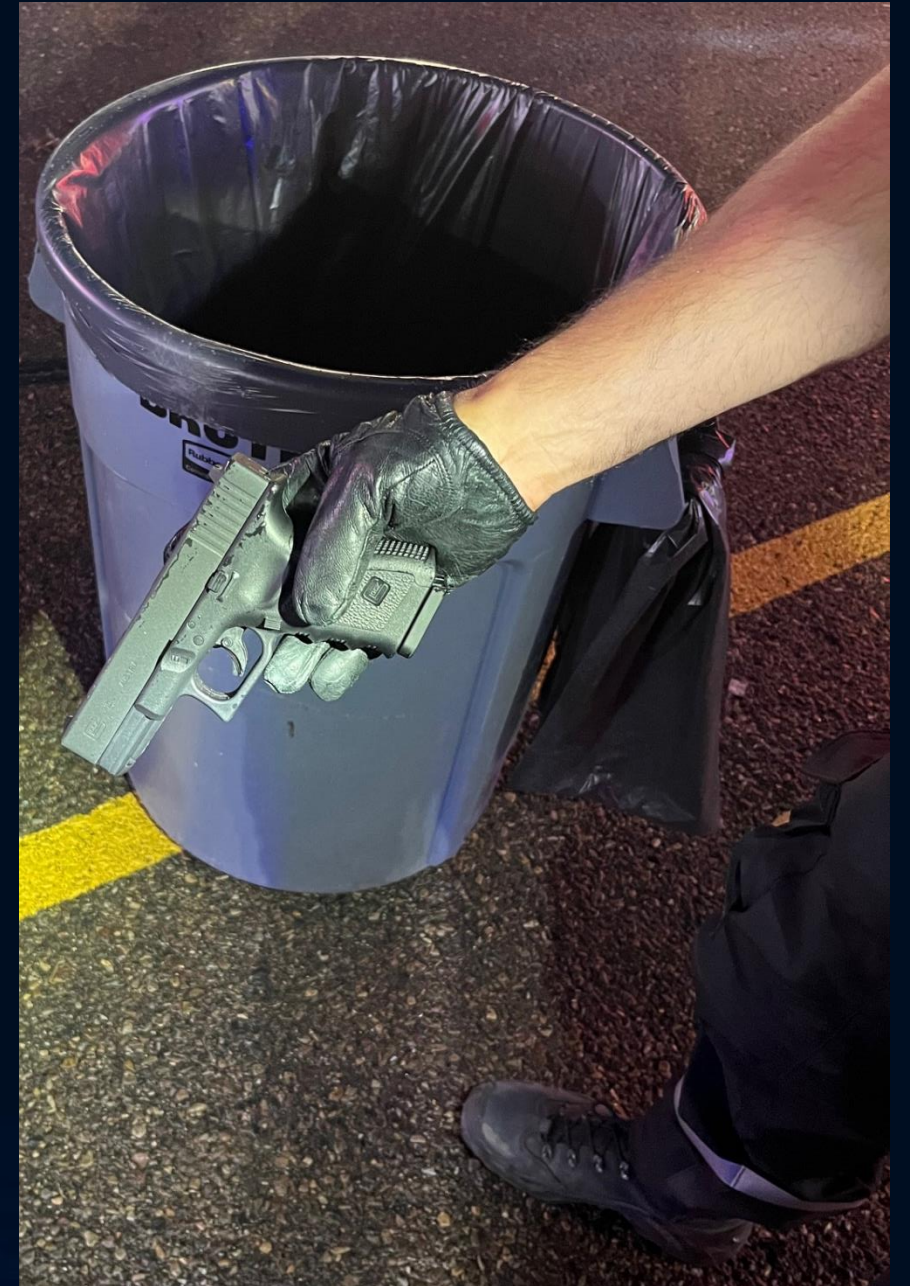


- No scales
- No Packaging
- Cash in a pocket
- Estimated cost chunks like "Chip Boys"
- Stash kept on beltline or underwear to limit search
- Likely on a bike wearing a cross body bag (Prob a stolen 13 year old boys Haro)

Fentanyl large seizures



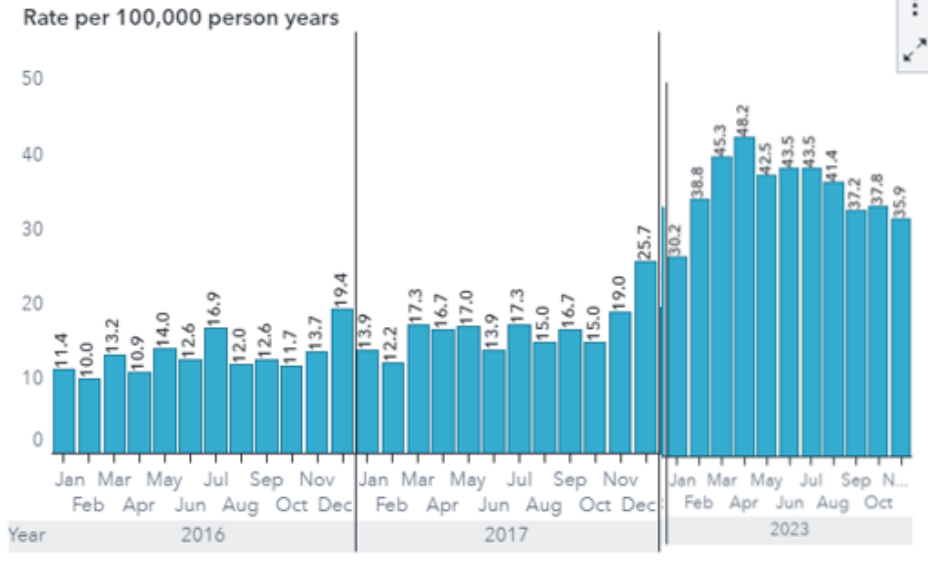
Every Single Day



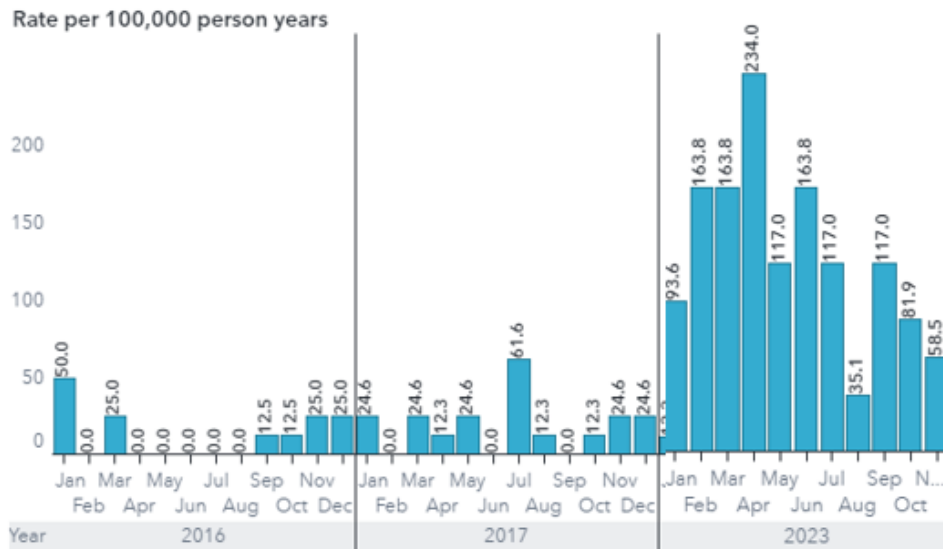
The criminal Code needs to be updated.
Prohibited Device – Plastic Knuckles should apply



Rate of drug poisoning deaths per 100,000 person



Rate of drug poisoning deaths per 100,000 person



People matter.

The numbers speak for themselves and good people are dying.



We hired people to be cops and the Opiate Crisis has taught us that some feel like morticians.

This has led to some lost time.

More importantly it has led to some people impacted by trauma.

Pic from Galt Gardens After OD death

Wellness Coordinator
Stacey PETITE has started
to change cultures around
LPS.

Its OK to talk about what we
saw, how it made us feel
and **MAKES** us feel in the
days later. We are messed
up and that's OK!



Crime Severity Index Score 2023

LETHBRIDGE METROPOLITAN

- Overall 129.14 (6.98% Increase)
- Violent Crime 125.38 (8.56% Increase)

TOP 5

1. Kamloops
2. Chilliwack
3. Red Deer
4. Lethbridge
5. Winnipeg

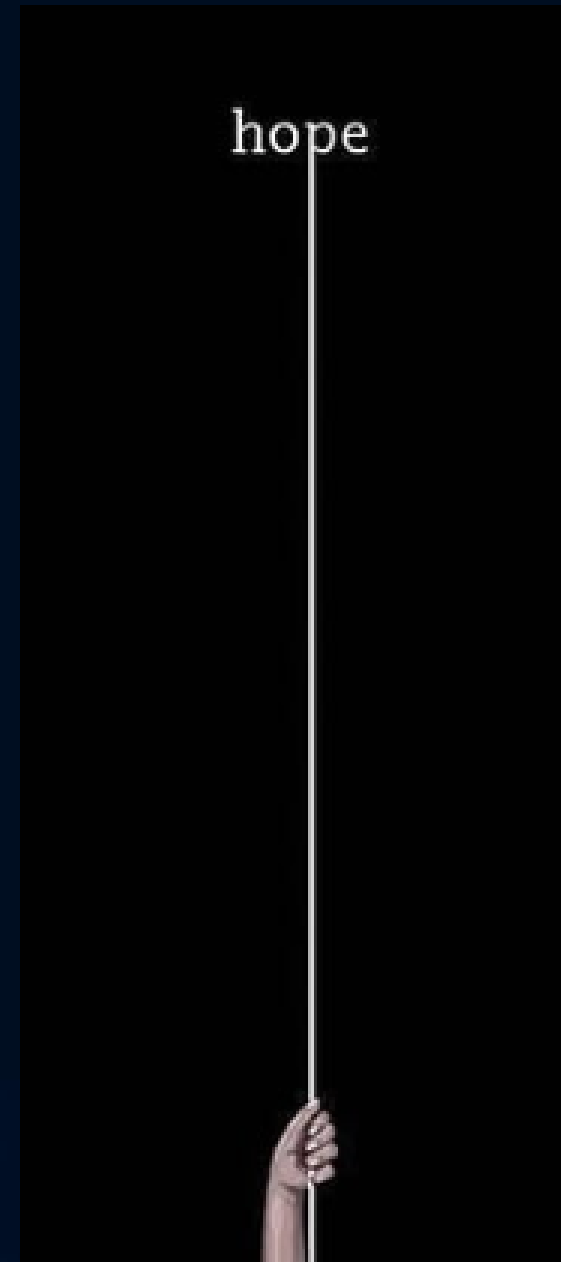


New data from Statistics Canada shows Lethbridge is slowly but surely getting better when it comes to crime, relative to other communities.

In each year from 2019-2021, Lethbridge had the highest CSI in all of Canada. That improved to third place in 2022.

Now in 2023 ONLY 4th!!!!

- **CSI Positives!!!!**



Downtown Person Crime Type 2023

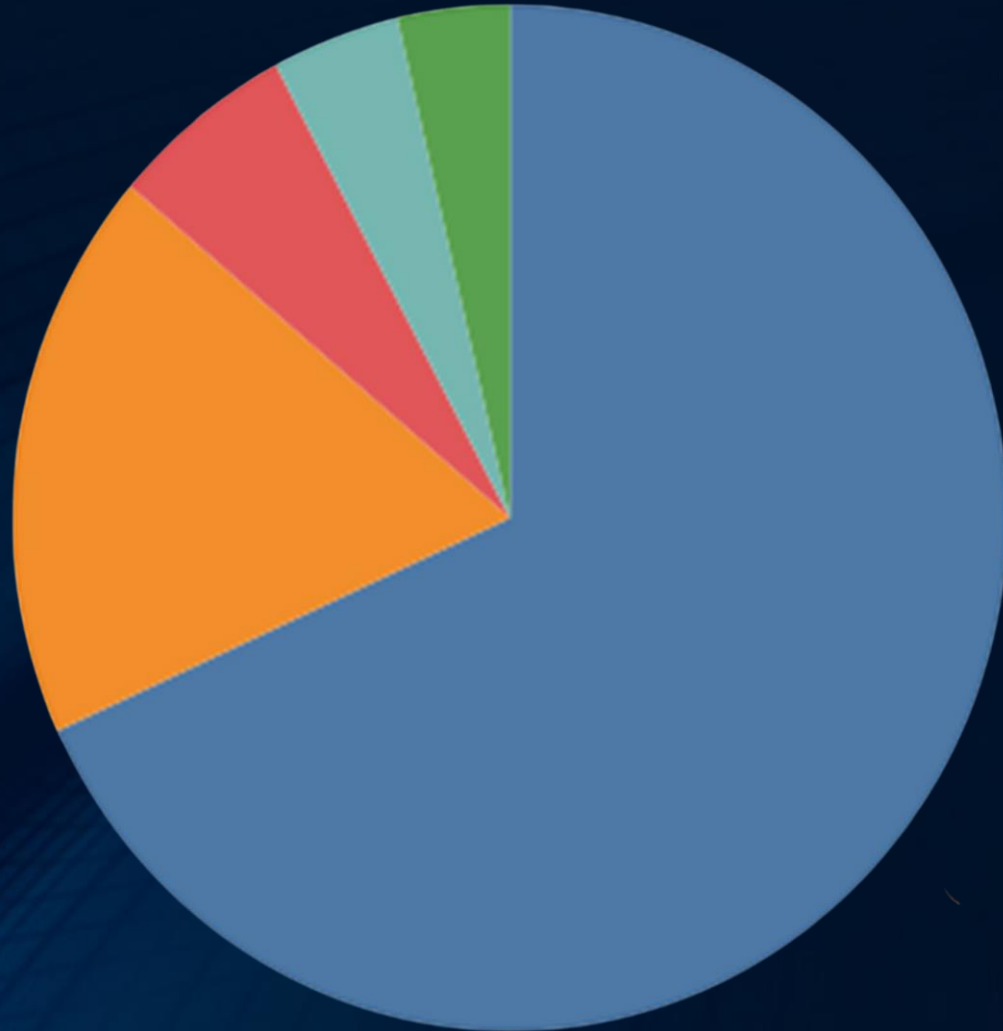
68% - Assault

18% - Threats

6% - Other

4% - Sexual Assault

4% - Robbery



Consent Was Given

JUSTICE IS AWARE THAT I DO AND HAVE SHARED THIS FORTHCOMING VIDEO. HE IS A GOOD HUMAN AND I LOOK FORWARD TO THE DAY THAT HE CAN PUT THIS ADDICTION PHASE OF HIS LIFE BEHIND.



What is Working for DPU?

- Having members present doing pro-active work
- Going to the violent calls or sudden deaths where community members are impacted by the trauma. These interactions build bridges that lead to relationships growing exponentially.
- Engaging the Community Partners early in events so they feel valued, trusted and part of the team. AHS, LFD, Shelter
- Being there for our Blood Tribe family members who take the time to come into town looking for family members or dealing with those who have lost loved ones. We knew them too!

What is Working for DPU



- Go to the meeting or event, be yourself and relax to break down perceptions of police and prove them wrong.
- Building honest relationships with the City of Lethbridge. Daily contact, parks staff, Encampment Response Model.
- Having the right members working who want to be out community policing.

Mountain Bike Units

- Mountain Bikes..... Being out on the street on the bike engaging the public and dealing with offenders.
- Bad guys ride bikes and know they can get away from a police car on a bike with a couple of well timed turns.
- Business owners see the bikes and love the presence.
- It is the best tool for deploying members in the downtown core to respond to calls be seen by **EVERYONE!**
- Must have support form a transport Unit.



- Contacted by Dispatch, Complainant or police.
- Funded by City of Lethbridge via CMHA
- On shift 7am till 12 or 2 AM
- Reduces calls for service
- Large transport van and two staff for transport.
- Through their outreach, the DOT works daily to mitigate problematic situations in the downtown area and in other identified hotspots in the community. DOT actively refers individuals accessing their services to other community supports and works from a harm reduction approach to actively reduce the effects of addictions and homelessness on our community.



Diversion Outreach Team (DOT)

Community Peace Officers CPOS

- LPS has 11 funded positions including a Sergeant as the supervisor.
- Have Criminal Code Authority for Theft Under \$5000, Mischief Under \$5000 and Obstruction
- Have all Authorities Under the TSA, Municipal Bylaws, Mental Health Act and POPA



CPOS have been a great addition!

- Attending social disorder related calls for service
- JIR (Judicial Interim Release Hearings)
- Traffic Enforcement
- Community Events
- Transports
- Trained offsite
- Need Support from police
- It does free up LPS members for other calls for service.



DPU and CPO members deployed together



- Need to all buy into the culture of working together
- Police members need to know the CPO authorities
- Great way to recruit police officers
- CPOs can attend and transport prisoners to LPS from MBT member arrests
- CPOs constantly find themselves in a call where DPU support is needed (Breach, Drugs, violence)

CPO Case Studies.....

Sharing

- time.....
- information
- crime trends
- safety talks with the community



Balance is Key on the street



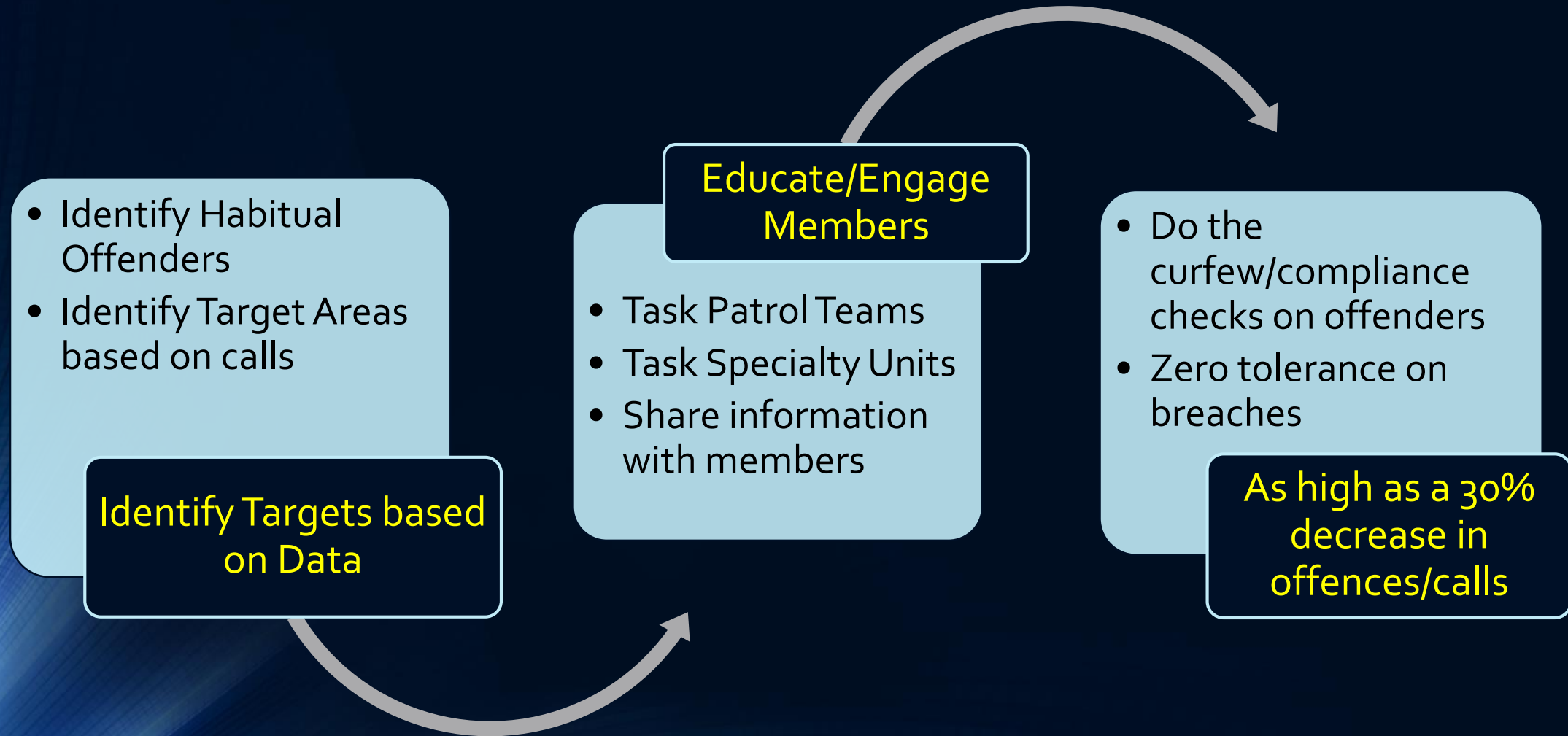
- Not enough enforcement :
 - The Public does not feel safe and decreases trust
 - Calls for service can increase
 - Violence increases and in turn CSI can.
 - Hard for business to survive
 - Massive pressure from municipal and provincial government
 - **PEOPLE DIE.**



- **To much enforcement:**

- Burn bridges with some..... community partners and the at risk population
- Todays offender is tomorrows victim
- We loose sight of the human touch

Compstat Model and Deployment



My Questions.....

-BIKES? ANY PROGRAMS THAT ARE HELPING REDUCE BIKE THEFTS AND THE BIKE PART CHAOS AROUND SHELTERS/DOPE HOUSES?

- CREATE A BIKE SHARING SYSTEM? (BRIGHT CONSISTENT COLOR PAINT JOB

- PROVIDE LOW COST BIKES TO BUY/HAVE
- COMMUNITY PROVIDED

-OPEN DRUG USE IDEAS OUTSIDE OF ENFORCEMENT AND OVERDOSE PREVENTION SITES?

-THE GARBAGE LEFT BEHIND BY EVERYONE

Questions?

