
Intervention and Support: Alberta's Response to Social Disorder and Urban Crime

Honourable Mike Ellis, ECA

Deputy Premier

Minister of Public Safety and Emergency Services



Introduction



- Calgary Police Service
 - Twelve-year policing career.
 - Focused on community and front-line policing.
 - Member of the Alberta Secretariat for Action on Homelessness.
- Member of the Legislative Assembly of Alberta for Calgary-West
 - Elected on October 27, 2014.
 - Previously served as Associate Minister of Mental Health and Addiction.



Navigation and Support Centres: a compassionate response



Navigation and Support Centres for Edmonton and Calgary

- Navigation and Support Centres were created in response to growing social disorder, urban crime and violence in Edmonton and Calgary.
- The centres are part of a coordinated approach to support the housing and recovery needs of vulnerable Albertans.
- Edmonton Navigation and Support Centre established January 2024
- Calgary Navigation and Support Centre established July 2024

Edmonton Navigation and Support Centre

- accessed by over 3,285 people since January 2024
- approximately 10,785 referrals and direct connections to supports made
- approx. 2,210 ID cards issued
- more than 1,480 people referred to financial supports
- about 945 people referred to health supports
- over 580 people connected to mental health and addiction services

Data current as of Sept. 4, 2024





Calgary Navigation and Support Centre

- accessed by over 900 people since July 2024
- approximately 4,365 referrals and direct connections to supports made
- approx. 470 ID cards issued
- more than 475 people referred to financial supports
- about 180 people referred to health supports
- over 460 people connected to mental health and addiction services

Data current as of Sept. 4, 2024

Key learnings

- Effective approach combines intervention with immediate wraparound supports.
- Health, mental health and addiction support and social services are being accessed by the people who need them.
- By removing people from bad situations, we're starving the criminal element that preys on encampments and restoring public safety to suffering communities.





Therapeutic living units (TLUs)

Alberta's TLU initiative

ALBERTA
RECOVERY
MODEL

Alberta's TLU programming supports the Alberta Recovery Model for Albertans experiencing addiction and mental health challenges through integrated and easily accessible recovery-oriented systems of care.

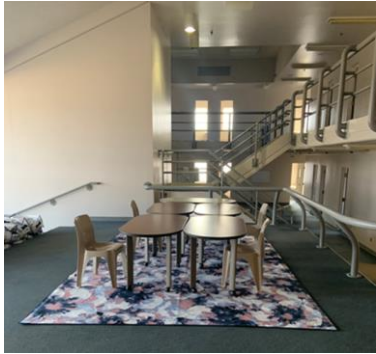


TLUs in Alberta

Lethbridge Correctional Centre (adult male unit, opened October 2023)



Calgary Correctional Centre (adult male unit, opened May 2024)



Red Deer Remand Centre (adult male unit, opened July 2023)



Fort Saskatchewan Correctional Centre (adult female unit, opened February 2024)

Alberta

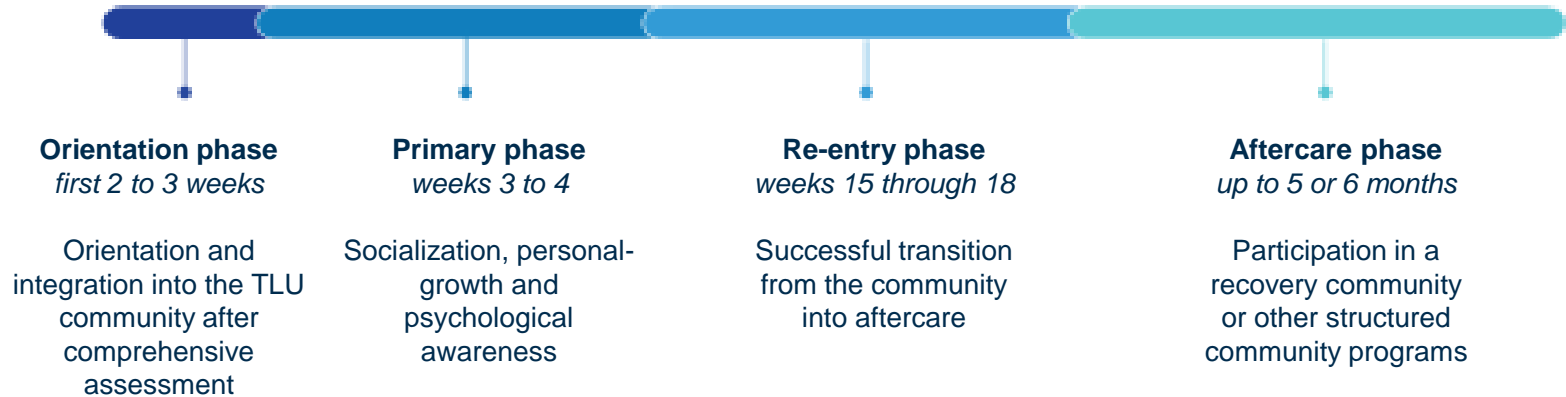
TLU operations in Alberta

- TLUs at provincial correctional facilities are operationally managed by Correctional Services Division staff.
- Program delivery within TLUs is provided by Recovery Oriented Systems of Care Solutions Group (RSG).
- RSG also provides and transition services at Alberta correctional facilities.



Combining intervention and support

Treatment phase timeline





Questions?

